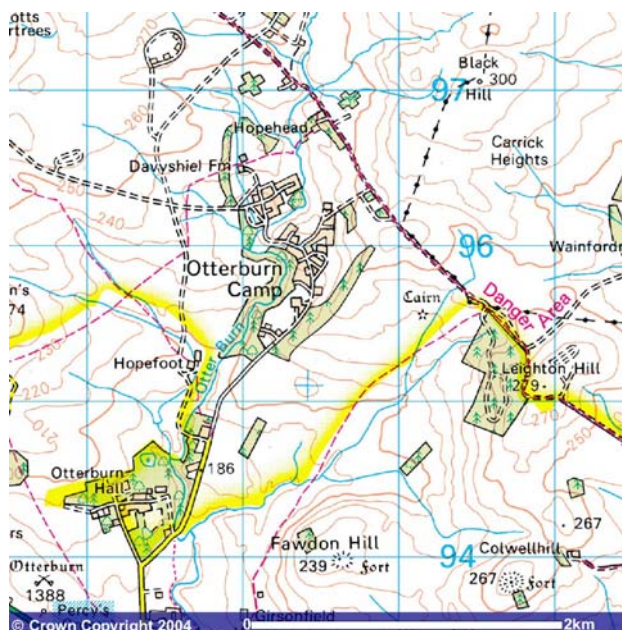




As an Army Cadet you need a detailed map. You will often be in the countryside, in the middle of nowhere, with no roads or signs. You'll have to be able to tell where you are from the forests, streams, rocks and from the shape of the ground. You can use the following type of map to get that information:

Reliability

Be aware that a map is only reliable at the exact time the data is collected. Trees are felled, houses and roads are built – obviously these changes on the ground won't appear on a map drawn earlier.



Care of Maps

A map only works well if it is in a good condition. Keep your map clean, dry and neatly folded. Do not write on a map in pen – use pencil if you have to and then rub it out afterwards.

Keep your map clean and dry by keeping it in a proper map case, laminating it or even keeping it in a see-through polythene bag. Always keep your map folded as small as possible to do the job – don't stand at the top of a windy hill with the map fully unfolded because it will act as a kite!

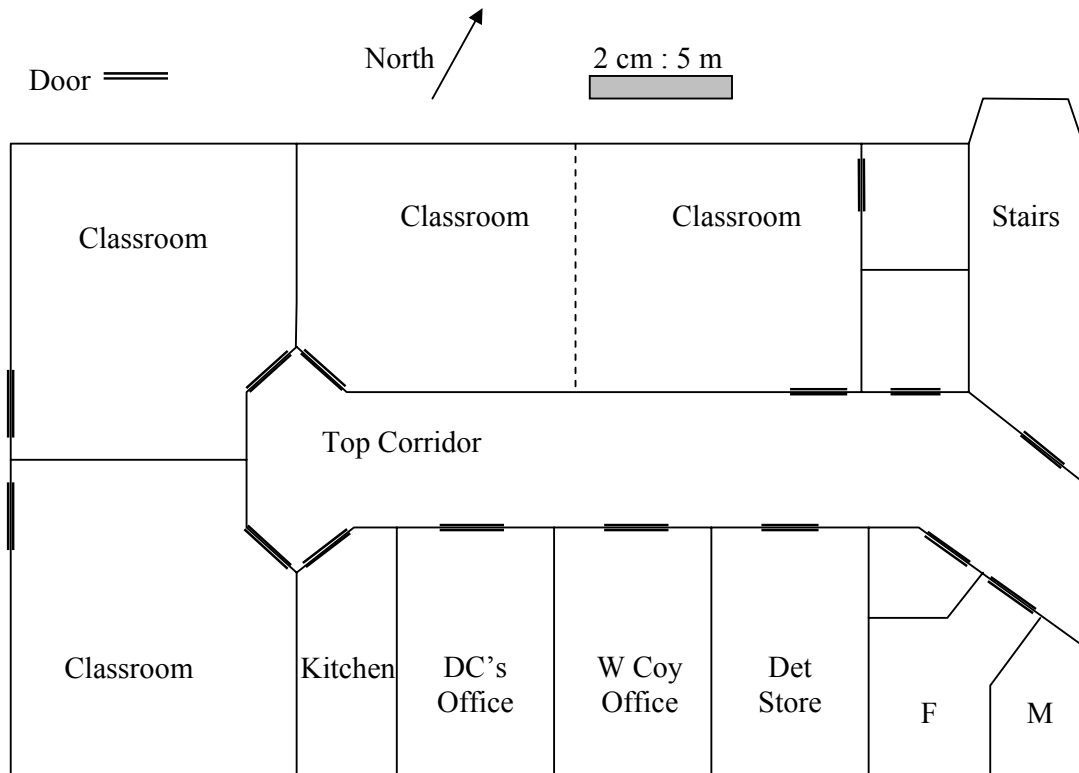
Drawing Maps

There are a few key ingredients when you draw a map:

- Always have a North arrow. Ideally North should be at the top of the map.

- Always give the scale of the map – for example 1 cm = 10 m. Draw a proper 'scale bar' if you can.
- Use a pencil and ruler and keep it neat.

An example: *Map of Alnwick Detachment.*



Summary of Key Points

- A map is a bird's eye view of a piece of land, drawn to scale, on a reasonably sized piece of paper.
- The map is only fully accurate at the time it is drawn.
- Keep your map clean and dry to get maximum use out of it.
- You can use a map case, laminate or polythene bag to protect your map.
- When you draw a map keep it neat, label North and give the scale.