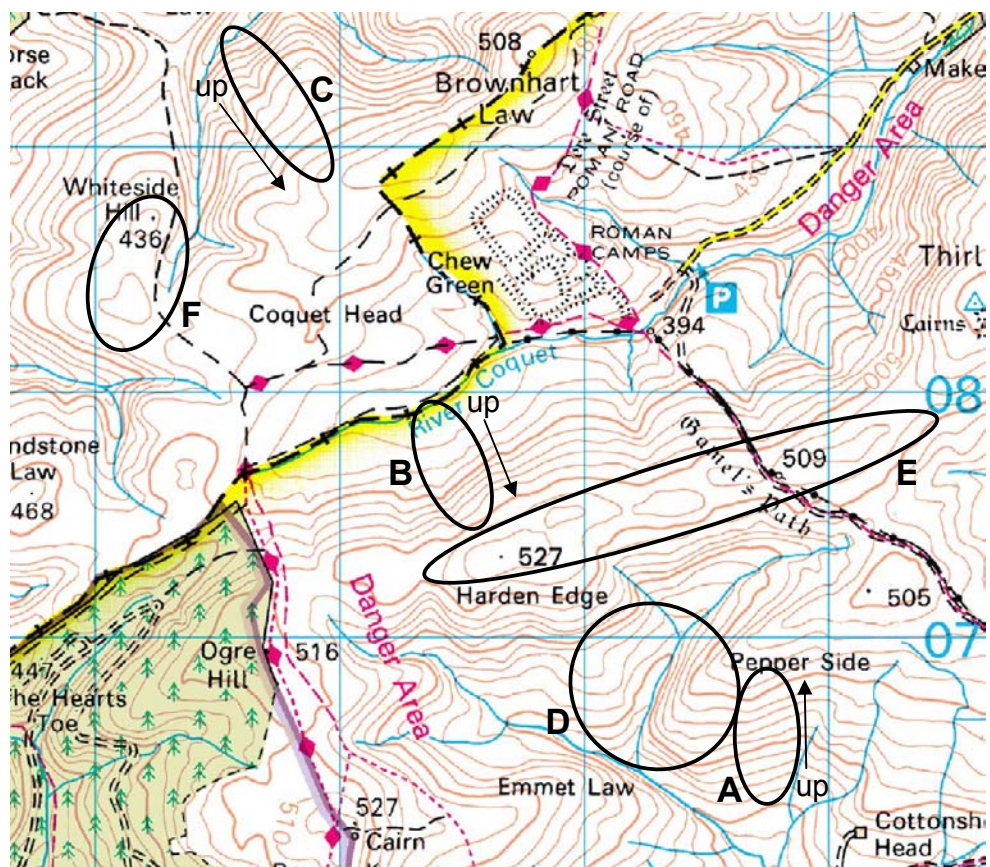


Map Reading – Relief and Vertical Interval (2)

1. The Shape of the Ground:

By looking at the contour lines you can visualise what the ground looks like. This is a very important skill for soldiers and cadets alike – you need to know the shape of the ground when you plan a patrol or expedition for example.

Luckily there are some common features on the ground, which are easily identified by looking at their contour pattern. Arrows show which way is up.



Key:

- A. Uniform Slope: A slope which is the same steepness throughout (contours are evenly spaced).
- B. Concave Slope: A slope which is steeper at the top than bottom (contours closer together at top than at bottom).
- C. Convex Slope: A slope which is steeper at the bottom than top. (contours closer together at bottom than at top).
- D. Spurs and Re-entrants: Two projecting pieces of ground (the spurs) with a valley (the re-entrant) in between. You often get a stream in the re-entrant between two spurs.
- E. Ridge: A line of several humps and hollows.
- F. Saddle: Two humps with a hollow between.

Commonsense: Streams start on high ground and flow downwards. You get rivers and marshes in ground which is lower than its surroundings.